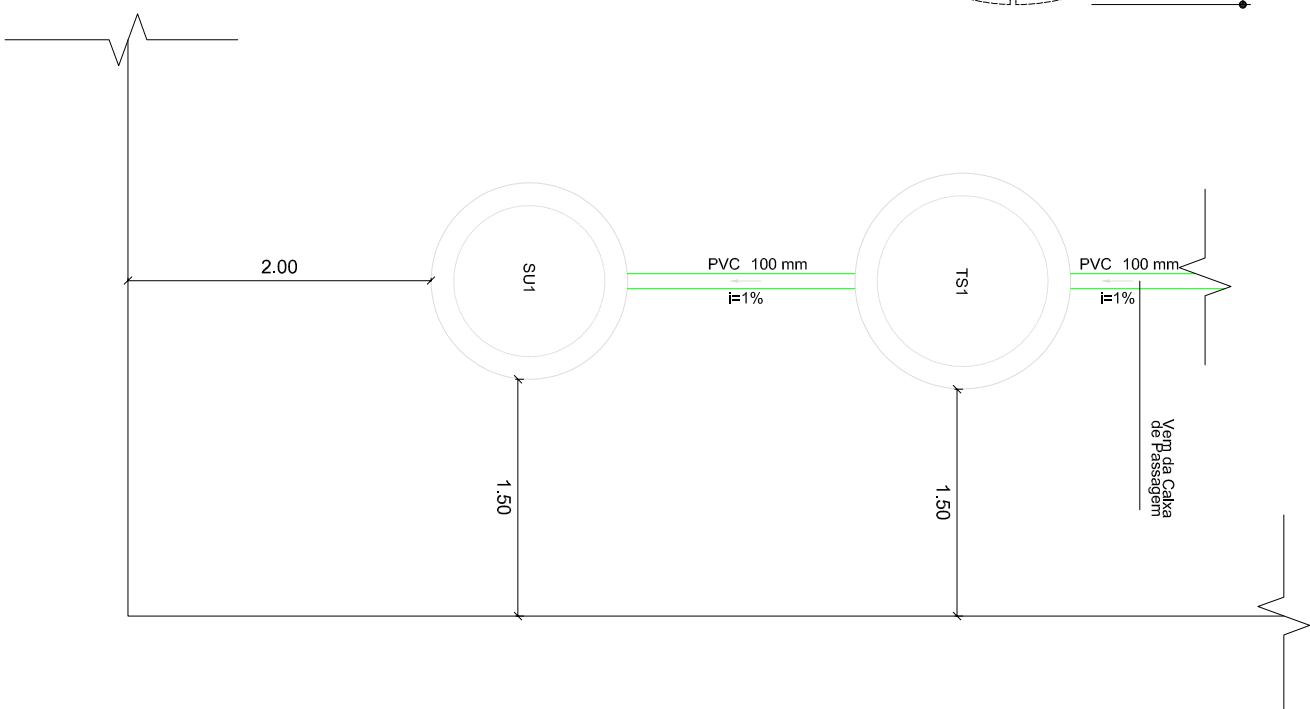
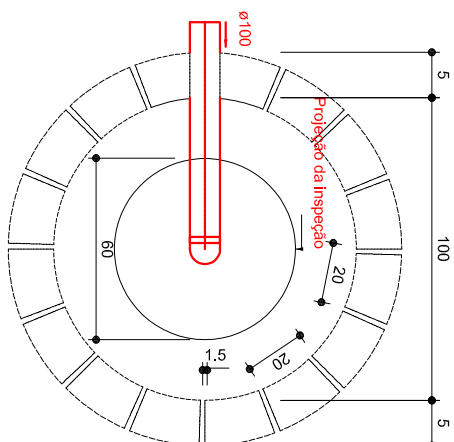
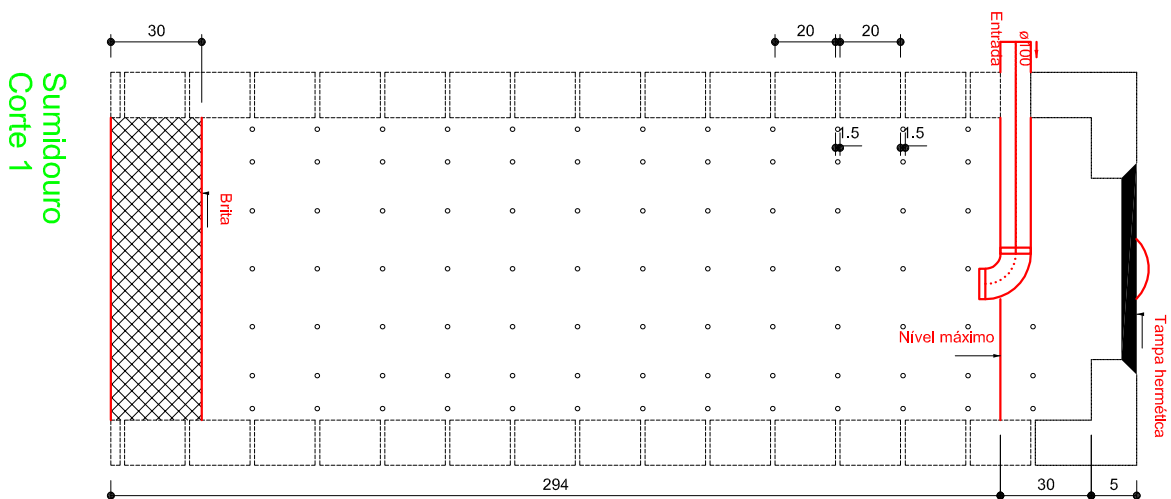
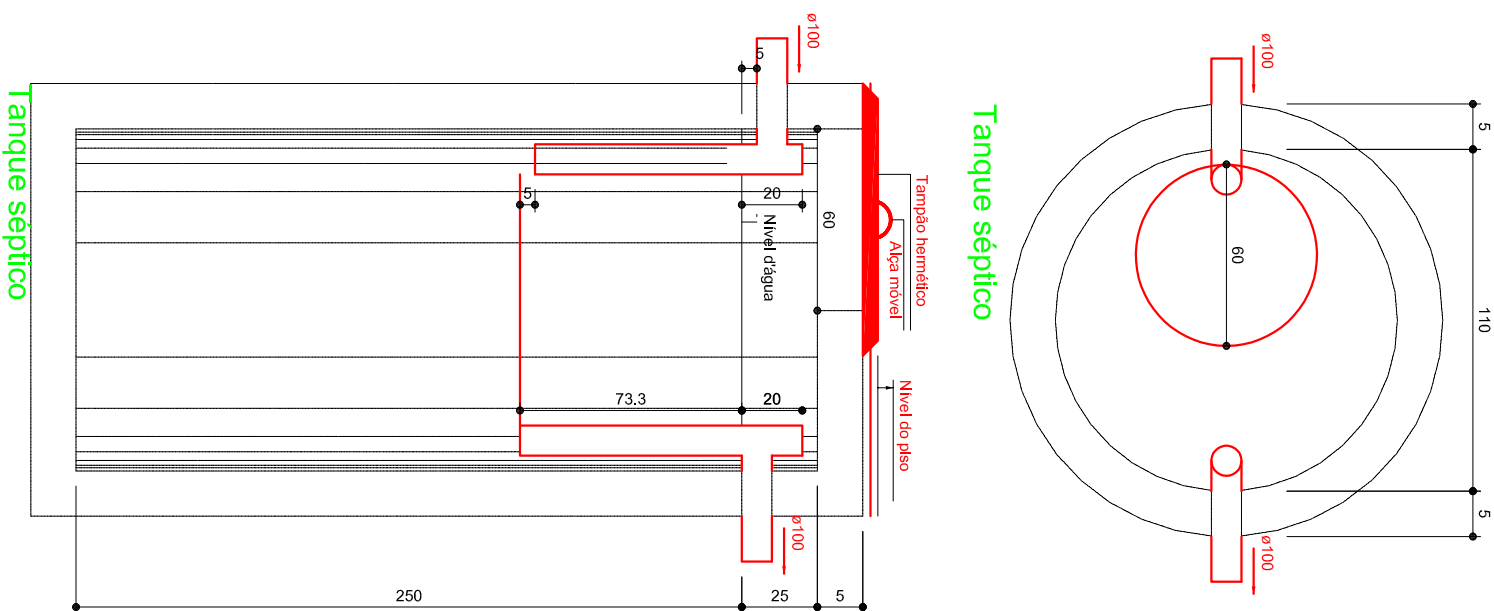


ESGOTO DOMÉSTICO

Endereço: 49 Unidades Habitacionais - Setor Nova Alexânia
 Proponente: Prefeitura Municipal de Alexânia



Sumidouro
Corte 1

Sumidouro
Planta baixa

Prefeitura Municipal de Alexânia
 CPNJ: 01.298.975/0001-00
 Proponente

Willis Mendes Garcia Lima
 CREA n.º 1014091306D-GO
 Engenheiro Civil

ALEXÂNIA

